



# DELTA DIGEST

September 2009

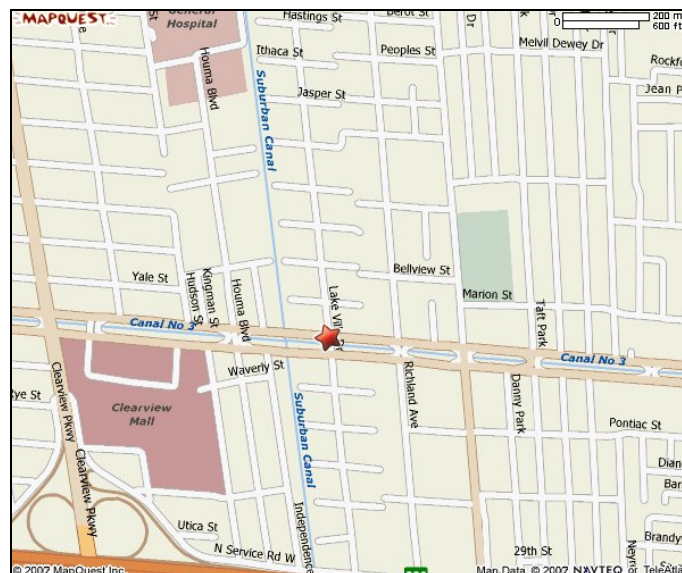
Editor: Stuart Feilden

The [New Orleans Chapter of ASHRAE](#) is once again pleased to distribute the latest Delta Digest, keeping you up-to-date with the latest happenings of your local ASHRAE chapter. As always, if you have any comments that can help us serve you better, please let us know.

## Meeting Information:

- Date and Time:** Tuesday, September 15, 2009
- Venue:** Carmines Italian and Seafood Restaurant  
4101 Veterans Blvd Metairie, La 70002 (See Map Below)
- Time:** 5:30 pm (Social) & 6:00 pm (Dinner & Presentation Begin)
- Cost:** \$ 30.00 per person (Includes dinner)
- Speaker:** Bob Witt, Mestek

**This is a great opportunity to attend a highly informative presentation and earn 1.0 PDH. Please feel free to bring a colleague or associate to the meeting and pass this along to any ASHRAE members who may not be on this list.**





# DELTA DIGEST

New Orleans Chapter – September 2009

Page 2

## *President's Message*

September 2009

Dear Fellow Members, Guests and HVAC Colleagues,

This month we'll kickoff the new ASHRAE 2009 – 2010 year with a presentation on ..... As always, these meetings are an opportunity to stay current with rapidly changing trends in mechanical design, due to sustainability trends and government mandates. Also, our social hour allows for industry networking with peers, vendors and potential clients. We'll have many exciting events this year, such as: an ALI seminar in November, an event with the UNO Student Mechanical Engineers, the annual Golf Tournament and more. Additionally, our local chapter is planning for the annual Regional CRC, which will be held in New Orleans in August of 2010. We'll have visitors from around the southeast in New Orleans for this three day event. Let's continue to support this rapidly changing industry and continue to leverage from local best practices and peer groups.

We look forward to seeing you at our monthly meetings.

Best Regards,

Kelly Hasney, Jr.



# DELTA DIGEST

New Orleans Chapter – September 2009

Page 3

## 2009 – 2010 ASHARE New Orleans Events

### General Membership Meeting Schedule

\*\*\* Meetings are typically on the 3<sup>rd</sup> Tuesday of every month. \*\*\*

September Meeting	Tuesday, September 15, 2009
October Meeting	Tuesday, October 20, 2009
November Meeting:	Tuesday, November 17, 2009
Christmas Party:	TBD
January Meeting:	Tuesday January 19, 2010
February Meeting:	Tuesday, February 23, 2010
March Meeting:	Tuesday, March 16, 2010
April Meeting:	Tuesday, April 20, 2010
May Meeting:	Tuesday, May 18, 2009



### Special Events Schedule

UNO Fall Event	TBD
ALI Seminar	TBD in November 2009
ASHRAE/ASPE Christmas Party	TBD in December 2009
14 <sup>th</sup> Annual Golf Tournament:	TBD in March 2009
Past President's Night	TBD
Research Promotion Night	TBD
CRC in New Orleans	August 5-7, 2010

### General Membership Meeting Presentation Topics

Sep 15	Bob Witt, with Mestek
Oct 20	Raphl Franklin, with Seresco, "Natatorium Design and Dehumidification" – Designated Lecturer
Nov 17	TBD
Dec	No speaker – Christmas Party
Jan 19	TBD
Feb 16	Tom Gardner, TBD
Mar 16	Vemar, TBD
Apr 20	Trane, TBD
May 18	TBD

### Board Meeting Schedule

September	Friday, September 11, 2009
October	Friday, October 16, 2009
November	Friday, November 13, 2009
January	Friday, January 15, 2010
February	Friday, February 19, 2010
March	Friday, March 12, 2010
April	Friday, April 16, 2010
May	Friday, May 14, 2010





# DELTA DIGEST

New Orleans Chapter – September 2009

Page 4

## Young Engineers in ASHRAE

Please direct any questions you may have on the ASHRAE YEA Connection to: [youngengineers@ashrae.org](mailto:youngengineers@ashrae.org). Expect the next edition of the newsletter in February 2009. Please feel free to email submissions for future newsletter articles regarding events at your local chapter.

The primary objective for the YEA Committee of Members Council is to enhance our member benefits for young professional ASHRAE members by identifying activities and services focused on their needs.

## Membership Corner

We wish to encourage those who may have changed jobs, addresses, phone numbers, or e-mail addresses to please logon to the ASHRAE website to update your account information. Consolidation of this information will be utilized to develop the Chapter Directory, so don't delay! Don't let bad information get published!

[WWW.ASHRAE.ORG](http://WWW.ASHRAE.ORG)

This year, news of our meetings will be transmitted in various forms, all in an effort to increase our Chapter's visibility and boost member attendance. Our Chapter has many members we haven't seen in quite a while. Please contact your associates in our profession (forward their information to [Stuart Feilden](#)), and encourage them to get involved in our Society on the local, regional, national, or international level. Also, look for meeting announcements in City Business and the weekend Money Section Calendar of the Times Picayune. Not receiving e-mail notifications? Changed jobs or e-mail addresses?

## Chapter Technology Transfer Corner

### Sustainable Design

#### **ASHRAE Research Targets Tying Together BIM, Energy Efficiency**

Ensuring that a common language of "energy efficiency" is spoken by both building information modeling software used by architects and energy analysis and simulation software used by engineers is the goal of new research funded by ASHRAE. [CLICK HERE](#) to view this article.



### Government Affairs

#### **Treasury, Energy Announce \$500 Million in Awards for Clean Energy Projects**

Marking a major milestone in the effort to spur private sector investments in clean energy and create new jobs for America's workers, Treasury Secretary Tim Geithner and Energy Secretary Steven Chu today announced \$502 million in the first round of awards from an



# DELTA DIGEST

New Orleans Chapter – September 2009

Page 5

American Recovery and Reinvestment Act (Recovery Act) program that provides cash assistance to energy production companies in place of earned tax credits.

[CLICK HERE](#) to view the article

## Technology

N/A

### **Technology Awards Program**

The purpose of the ASHRAE Technology Awards program is to:

1. Recognize ASHRAE members who design and/or conceive innovative technological concepts that are proven through actual operating data;
2. Communicate innovative systems designs to other ASHRAE members;
3. Highlight technological achievements of ASHRAE to others, including associated professionals and societies worldwide, as well as building and facility owners.

For more information on this program, [Click Here](#).

### **Interested in Upcoming Meeting Topics?**

In an effort to get information into your hands effectively and efficiently, the New Orleans Chapter website is continually updated with new information, including meeting notices, past issues of Delta Digest, and upcoming meeting topics and speaker bios. Check out the meeting info section at the Chapter website – just click on:

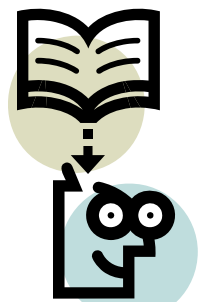
<http://www.ashraeno.com/index.html>.

### **ASHRAE Research**

Thank you for your support of ASHRAE.

One of the missions of ASHRAE is to fund and administer research projects related to the HVAC/R sciences. Numerous advances in our industry have been made over the past several decades due to the work funded by ASHRAE Research. Last year we had excellent participation by our membership, and we were able to exceed our goal. Many thanks to our past RP Chairman Harold Baur for his hard work. Harold was recognized for his accomplishments at our recent CRC in Memphis, including receiving the Regional Award for outstanding performance as RP Chair. Congratulations Harold!

As we move head first into the new ASHRAE year, please know that I will be contacting you to discuss Research Promotion, and will request your financial support for this worthwhile cause. After last year's





# DELTA DIGEST

New Orleans Chapter – September 2009

Page 6

outstanding performance, expectations are high! Thank you in advance for your consideration of making your tax-free donation to Research Promotion this year.

Best regards,

Damien W. Serauskas, P.E.  
ASHRAE NO Chapter RP Chair

Contributions to ASHRAE Research should be made payable to ASHRAE Research and mailed to Damien W. Serauskas, P.E., 15 Cypress Point Lane, New Orleans, LA 70131



# DELTA DIGEST

New Orleans Chapter – September 2009

Page 7

## ASHRAE Chapter Banner



The bottom of the banner says "Founded in 1904."

---

[STUART FEILDEN](#) - EDITOR

---

*Statements made in this Publication are not Expressions of the Society or the Chapter, and may not be reproduced without permission of the Chapter*