



# DELTA DIGEST

October 2008

Editor: Stuart Feilden

The [New Orleans Chapter of ASHRAE](#) is once again pleased to distribute the latest Delta Digest, keeping you up-to-date with the latest happenings of your local ASHRAE chapter. As always, if you have any comments that can help us serve you better, please let us know.

## Meeting Information:

**Date and Time:** Tuesday, October 21, 2008

**Venue:** Carmines Italian and Seafood Restaurant  
4101 Veterans Blvd Metairie, La 70002 (See Map Below)

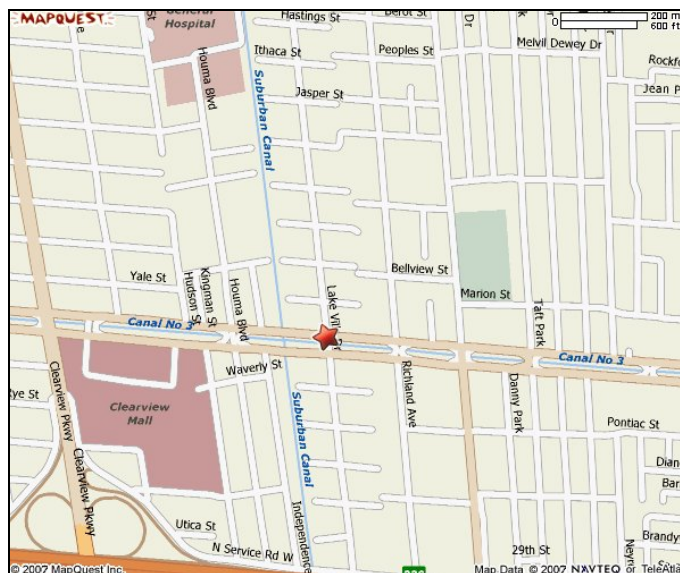
**Time:** 5:30 pm (Social) & 6:00 pm (Dinner & Presentation Begin)

**Cost:** \$ 30.00 per person (Includes dinner)

**Topic:** "ASHRAE - Leading the World to an Independent and Sustainable Future"

**Speaker:** Terry Townsend - ASHRAE Distinguished Lecturer, ASHRAE Past President

This is a great opportunity to attend a highly informative presentation from and ASHRAE Distinguished Lecturer and earn 1.0 PDH. Please feel free to bring a colleague or associate to the meeting and pass this along to any ASHRAE members who may not be on this list.





# DELTA DIGEST

New Orleans Chapter – October 2008

Page 2

## *President's Message*

October 2008

Dear Fellow Members, Guests and HVAC Colleagues,

Thank all of you who were able to attend last month's meeting. Our scheduled speaker was injured in a motorcycle accident and John Bevington stepped in and had a great presentation on refrigeration. I think everyone who was in attendance would agree that there are many industrial refrigeration applications that are very unique.

I would like to thank Ron Somerville for volunteering to help with updating our membership roster. This is an arduous task and we can use all the help we can get.

Stuart Feilden, Michael Cooper, and I met with Carsey Hall and his Energy Management class at UNO to discuss reinvigorating the UNO ASHRAE student chapter. Stay tuned for future updates.

This month's speaker is Terry Townsend, P.E. ASHRAE Fellow, distinguished lecturer and Society President of ASHRAE in 2006-2007. Terry is president of Townsend Engineering and has worked as a consulting engineer for many years. Terry will be speaking on Leading the World to an Independent and Sustainable Future. As past President of ASHRAE Terry brings a global perspective to Sustainability. Please join us to participate in a very informative discussion.

Kindest Regards,

Mak Kersanac

Ron Somerville



# DELTA DIGEST

New Orleans Chapter – October 2008

Page 3

## 2008 – 2009 ASHARE New Orleans Events

### General Membership Meeting Schedule

\*\*\* Meetings are typically on the 3<sup>rd</sup> Tuesday of every month. \*\*\*

<del>September Meeting</del>	<del>Tuesday, September 16, 2008</del>
October Meeting	Tuesday, October 21, 2008
November Meeting:	Tuesday, November 18, 2008
Christmas Party:	Thursday, December 11, 2008
January Meeting:	Tuesday January 20, 2009
February Meeting:	Tuesday, February 17, 2009
March Meeting:	Tuesday, March 17, 2009
April Meeting:	Tuesday, April 21, 2009
May Meeting:	Tuesday, May 19, 2009



### Special Events Schedule

ALI Seminar – Dedicated Outdoor Air	Friday, November 14, 2008, 8 – 4 pm
Golf Tournament:	TBD
Past President's Night	TBD
Research Promotion Night	TBD

### Board Meeting Schedule

<del>September Meeting:</del>	<del>Friday, September 12, 2008</del>
October Meeting:	Friday, October 17, 2008
November Meeting:	Friday, November 14, 2008
January Meeting:	Friday, January 16, 2009
February Meeting:	Friday, February 13, 2009
March Meeting:	Friday, March 13, 2009
April Meeting:	Friday, April 17, 2009
May Meeting:	Friday, May 15, 2009



### General Membership Meeting Presentation Topics

<del>Sept 16th</del>	<del>"Indoor Air Quality for Building Occupants", Daniel Int Hout, III – ASHRAE Distinguished Lecturer</del>
Oct 21 <sup>st</sup>	"ASHRAE - Leading the World to an Independent and Sustainable Future", Terry Townsend - ASHRAE Distinguished Lecturer, ASHRAE Past President
Nov 18 <sup>th</sup>	Student Night
Dec TBD	Christmas Party
Jan 20 <sup>th</sup>	"Green Maintenance Needed to Keep HVAC Systems Green", Rob Baker - ASHRAE Distinguished Lecturer
Feb 17 <sup>th</sup>	"Ethics for Engineers", - Dr. Norma Mattei - University of New Orleans
Mar 17 <sup>th</sup>	TBD – Possible joint meeting with Louisiana USGBC Chapter
Apr 21 <sup>th</sup>	"Open Systems and Integration; When, Why, and How to Specify."
May 19 <sup>th</sup>	"Selection Criteria Affecting the Chiller in a Chilled Water System", Julian DeBullet - ASHRAE Distinguished Lecturer



# DELTA DIGEST

New Orleans Chapter – October 2008

Page 4

## Membership Corner

We wish to encourage those who may have changed jobs, addresses, phone numbers, or e-mail addresses to please logon to the ASHRAE website to update your account information. Consolidation of this information will be utilized to develop the Chapter Directory, so don't delay! Don't let bad information get published!

[WWW.ASHRAE.ORG](http://WWW.ASHRAE.ORG)

This year, news of our meetings will be transmitted in various forms, all in an effort to increase our Chapter's visibility and boost member attendance. Our Chapter has many members we haven't seen in quite a while. Please contact your associates in our profession (forward their information to [Stuart Feilden](#)), and encourage them to get involved in our Society on the local, regional, national, or international level. Also, look for meeting announcements in City Business and the weekend Money Section Calendar of the Times Picayune. Not receiving e-mail notifications? Changed jobs or e-mail addresses?

## Chapter Technology Transfer Corner

### Sustainable Design

#### **Ventilation Heat Recovery for Laboratories**

**By Otto VanGeet, P.E., and Sue Reilly, P.E.**

According to the authors, laboratories typically require 100% outside air at high ventilation rates primarily for safety reasons. The heating and cooling energy needed to condition this air, as well as the fan energy needed to move it, often is five times greater than the amount of energy used in most offices for these same purposes.

The article focuses on one approach: air-to-air energy recovery using enthalpy wheels, heat pipes, or runaround loops in new construction. [CLICK HERE](#) to view the article.



### Government Affairs

#### **DOE Awards \$15 Million to 21 Companies for Efficient Buildings**

DOE announced that it has selected 21 companies to receive \$15 million as the first phase of awards for the Net-Zero Energy Commercial Building Initiative. DOE's Pacific Northwest National Laboratory and National Renewable Energy Laboratory will work with each awardee to design, build, commission, and operate at least one new energy-efficient prototype building. For more information [CLICK HERE](#) to view the article.

### Technology

#### **Service Life & Maintenance Cost Database**

Engineers depend on accurate owning and operating data to make decisions involving the life cycle and functionality of buildings. This database, sponsored by ASHRAE Technical Committee 7.8, Owning and Operating Costs, exists to provide current information to engineers. Data can be submitted after registration. For more information [CLICK HERE](#) to view the article.



# DELTA DIGEST

New Orleans Chapter – October 2008

Page 5

## **Technology Awards Program**

The purpose of the ASHRAE Technology Awards program is to:

1. Recognize ASHRAE members who design and/or conceive innovative technological concepts that are proven through actual operating data;
2. Communicate innovative systems designs to other ASHRAE members;
3. Highlight technological achievements of ASHRAE to others, including associated professionals and societies worldwide, as well as building and facility owners.

For more information on this program, [Click Here](#).

## **Interested in Upcoming Meeting Topics?**

In an effort to get information into your hands effectively and efficiently, the New Orleans Chapter website is continually updated with new information, including meeting notices, past issues of Delta Digest, and upcoming meeting topics and speaker bios. Check out the meeting info section at the Chapter website – just click on:

<http://www.ashraeno.com/index.html>.



## ASHRAE Learning Seminar

### New Orleans Chapter of ASHRAE Presents: Dedicated Outdoor Air Systems: Design and Field Implementation (7 PDHs)

**Where:** Hilton Riverside Hotel

**When:** November 14<sup>th</sup> 8:00 a.m. – 4:00 p.m.

**Cost:** \$200 per attendee (lunch included)

**Registration:** See attached registration form



### **Seminar Description:**

#### **Dedicated Outdoor Air Systems (DOAS): Design and Field Experiences**

Applications of DOAS have expanded significantly over the past 5 years. As a result, Dr. Mumma's presentation focus has shifted away from "The Reasons Engineers Are Seriously Considering Them" to "*DOAS Design Field Experiences*". Specific attention will be given to controls, enormously expanded equipment choices, comfort and ADPI, energy performance, humidity control, loss of air side economizers, LEED points, parallel systems, and pitfalls.

#### **Chilled Ceilings, Floors, and Beams**

Chilled Ceilings, Floors, and Beams have been met with skepticism by many US engineers due to problems encountered with systems installed in the 1960's, as well as an on-going perception that condensation, capacity and cost are insurmountable problems. Dr. Mumma will forthrightly address these three issues. And he will elaborate on the performance of integrated DOAS Chilled Ceiling, Floor or Beam systems in the areas of human comfort, safety—including terrorist resistance, and LEED/sustainable design. Both design and operating experiences from buildings employing these technologies will be discussed. Finally, the chilled ceiling, floor or beam engineering design process will be laid out, including emphasis on the need for DOAS when chilled ceiling/floor/beam projects are undertaken.

### **Instructor:**



**Stanley A. Mumma, Ph.D., P.E.**, is a Professor Emeritus of Architectural Engineering at The Pennsylvania State University. Stanley's research interests include Dedicated Outdoor Air Systems; Chilled Ceiling/Radiant Cooling; Mathematical Modeling, Simulation, and Optimization of Building Mechanical Components and Systems; Solar and Alternate Energy; Control of Ventilation Systems to Provide Acceptable Indoor Air Quality; and Direct Digital Controls. Stanley is an ASHRAE Fellow and has served on numerous committees and councils in ASHRAE over the past 28 years, including his current roles as a course presenter, distinguished lecturer, and as a member of the ASHRAE Publication Committee.

Stanley A.  
Mumma



# DELTA DIGEST

New Orleans Chapter – October 2008

Page 7

Sponsors TBA

## ASHRAE Learning Seminar Registration Form

**Topic:** “Dedicated Outdoor Air Systems: Design and Field Implementation”  
7 PDHs to be provided

**When:** November 14<sup>th</sup> 8:00 a.m. – 4:00 p.m.

**Where:** Hilton Riverside Hotel and Convention Center  
2 Poydras St.  
New Orleans, LA

**Cost:** \$200 per attendee (lunch included)  
*All proceeds support the local New Orleans ASHRAE Chapter*

Please contact Michael Cooper at (504) 841-2333 for additional information.

---

### Attendee Information

Name: \_\_\_\_\_

Firm: \_\_\_\_\_

Address: \_\_\_\_\_

\_\_\_\_\_

\_\_\_\_\_

Work Phone: \_\_\_\_\_

Email: \_\_\_\_\_

**Please make checks payable to ASHRAE New Orleans Chapter and mail registration form along with check to:**

MCC Group  
Attn: Michael Cooper – Engineering Dept  
3001 17<sup>th</sup> Street  
Metairie, LA 70002



# DELTA DIGEST

New Orleans Chapter – October 2008

Page 8

## ASHRAE Research

Thank you for your support of ASHRAE.

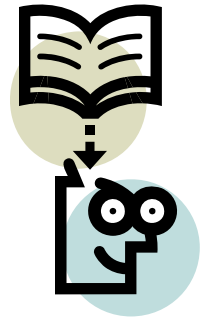
One of the missions of ASHRAE is to fund and administer research projects related to the HVAC/R sciences. Numerous advances in our industry have been made over the past several decades due to the work funded by ASHRAE Research. Last year we had excellent participation by our membership, and we were able to exceed our goal. Many thanks to our past RP Chairman Harold Baur for his hard work. Harold was recognized for his accomplishments at our recent CRC in Memphis, including receiving the Regional Award for outstanding performance as RP Chair. Congratulations Harold!

As we move head first into the new ASHRAE year, please know that I will be contacting you to discuss Research Promotion, and will request your financial support for this worthwhile cause. After last year's outstanding performance, expectations are high! Thank you in advance for your consideration of making your tax-free donation to Research Promotion this year.

Best regards,

Damien W. Serauskas, P.E.  
ASHRAE NO Chapter RP Chair

Contributions to ASHRAE Research should be made payable to ASHRAE Research and mailed to Harold Baur at 9729 Paula Drive, River Ridge, LA 70123.



## ASHRAE Returns to Chicago for Winter Conference and AHR EXPO

Chicago, with one of the most recognizable skylines in the United States, has long-standing status as a livable urban center. That the city has stood the test of time makes it the perfect backdrop for this year's ASHRAE Winter Conference theme: *Sustainable Urban Design: Engineering Tomorrow... Today.*

The Palmer House Hilton will once again host ASHRAE January 24 – 28, with the ASHRAE co-sponsored AHR Expo taking place Jan. 26-28 at McCormick Place. The conference promises to be a great way to kick off the new year, with opportunities to interact with colleagues, learn technical information, and hear Keynote Speaker Chris Luebke of Arup speak on sustainability and thoughtful design and Technical Plenary speaker Adrian Bejan, Ph.D., explain technical evolution through "constructal theory" which he says can predict how everything flows through time and space.

The technical program highlights the conference theme and will feature presentations on energy conservation, indoor environmental quality, sustainability efforts and more that will help you earn your PDHs. Seeking to create additional value for Expo and Conference attendees, ASHRAE is launching "Wednesday Welcome," at which all ASHRAE technical program sessions on Jan. 28 take place at McCormick Place. The "Wednesday Welcome" includes 18 hands-on, applications-type programs, held from 9 a.m. to 1:30 p.m., leaving the afternoon open to tour the Expo with more than 1,850 exhibits covering a world of equipment, systems, components and technology for the building industry. Admission to the "Wednesday Welcome" is included with your full ASHRAE Winter Conference registration or you can purchase a ticket for the full day for \$99.





# DELTA DIGEST

New Orleans Chapter – October 2008

Page 9

You can also earn PDHs and CEUs at Professional Development Seminars and Short Courses brought to you by the ASHRAE Learning Institute.

Networking opportunities and chances to see Chicago are plentiful at the ASHRAE Winter Conference. Meet with old friends at the Welcome Party, Presidents Luncheon and Member's Night Out. Technical tours of the city take you to the Intercontinental Hotel and The Art Institute of Chicago and you can see mansions and temples of the city, or take a cooking class on one of the general tours.

For complete, updated information and to register for the ASHRAE Winter Conference, go online to <http://www.ashrae.org/chicago> . Visit <http://www.ahrexpo.com> to learn more about the AHR EXPO.

## **Leadership Recall Interview** **with Frank Schambach**

Frank Schambach, a member of ASHRAE for over 27 years, is a person who has served ASHRAE tirelessly during his years. He has not only served the New Orleans Chapter over the years, but also has held positions in our region as well as Society involvement.

Frank attended Archbishop Rummel High School, and graduated from Tulane University in 1978. He was working at the Landmark Hotel as Chief Engineer when he had an opportunity to move to University of New Orleans as an Energy Management Engineer in 1979. While at U.N.O., David Levine, who was a Carrier representative at the time, persuaded Frank to join ASHRAE (Levine, who passed away shortly thereafter, is now remembered by his name on the outstanding chapter award presented each year at the Chapter Regional Conference). Frank joined as an Associate in 1981.

While at U.N.O., Frank saw tremendous growth at the university. While at U.N.O., He worked on several energy conservation projects, and one of his projects placed 2<sup>nd</sup> in ASHRAE Energy Efficiency Award for Existing Buildings. In 1991, he became Director of Physical Plant. During Frank's tenure at U.N.O., the campus grew from 250,000 square feet of buildings to 2.1 million square feet by the time he retired in 2000.

After joining ASHRAE, he quickly became involved in chapter activities. From 1985 to 1987, he served as the Energy and Technical Activities Chair for New Orleans. From there, he got on the board and moved his way through the positions until he became president in 1992-93. One of the highlights of his presidency was the CRC held in New Orleans in 1992. Hosting an event like that mobilizes the chapter and increases participation, and Frank recalls the revitalization it gave to the New Orleans Chapter. It was a very successful event and also led Frank to get involved in a regional capacity.

Schambach worked with Billy Copeland, then the Regional D.R.C. while planning our C.R.C. He became assistant D.R.C. under Stan Houston from 1993 through 1995. In that capacity, he assisted Houston by attending regional meetings and making chapter visits. One of his lasting contributions was the institution of incoming president training that began during this time and is still going on today. During this time, Frank became a member of the Meetings and Arrangements Committee on a Society Level. In 1994, the ASHRAE Winter Meeting was held in New Orleans, and as the host chapter, Frank Schambach was the General Chair. It was a huge undertaking for the chapter, but it was a successful event under Frank's leadership.

Frank took over as Regional Vice-Chair for Refrigeration from 1995-1998. From there he moved on to the Refrigeration Committee for the Society. He served as Vice Chairman in 1998 and as Chairman in 1999. It was during his time on that committee that Refrigeration was changed from a grass roots committee to a technical committee, an accomplishment Frank is proud of. The emphasis on refrigeration was diminishing, and through this action, its' awareness on a Society level grew. In 2000, he moved into the Society Technology Council until 2003, and was a member of the Society Programs Committee for 2003 to 2005. From 2005-06, he served as Vice Chairman for that committee.



# DELTA DIGEST

New Orleans Chapter – October 2008

Page 10

Schambach's service to ASHRAE is also evidenced by the awards he has been recognized with. On a chapter level he was awarded the David Levine Award during his presidency. He also has received the Cary B. Gamble Award for Outstanding Service to the New Orleans Chapter. He has also been awarded the Regional Award of Merit in 1999 and Distinguished Service Award in 2003.

Since retiring from U.N.O., Frank started a company called Total Building Concepts, which offers construction management services. Asked what his fondest memories of ASHRAE are, Frank remembers the people he has met and the fun he has had. "I've met people from all over the world" recalled Schambach, who still attends most chapter meetings, regional conferences and Society Winter and Summer Meetings. For those of us who have been fortunate to work with Frank over the years, it was always fun. Frank has enriched our chapter and his representation on Regional and Society Committees is a credit to our local chapter. He has truly made the New Orleans a better chapter.

Submitted by Buddy Hodge, 4/28/08

## Past President Facts New Orleans Chapter of ASHRAE

George "Elmer" May was our first president. At that time, we were known as The American Society of Heating & Ventilation Engineering (ASH & VE). Although we don't have exact dates, our Society recognizes that our Chapter was officially chartered in 1939. It was not until December of 1958 when the chapter officially became The American Society of Heating, Refrigerating, and Air Conditioning Engineers after merging with ASRE (American Society of Refrigerating Engineers). The first president of the combined societies was Thomas Stokes.

Our chapter's second president, Cary B. Gamble, began a legacy of leadership which really guided our chapter during the early years of the New Orleans Chapter. Gamble's consulting engineering business was widely respected throughout the country. His firm was a pioneer and did many high profile jobs in the early days of air conditioning. He also encouraged participation in ASHRAE, and from his firm, they gave us the following presidents: Ralph Elizardi, William Martin, Jr., Thomas Stokes, Edward Sanford, Randy Lewis, Paul Coe, and Floyd Berlin. Tom Boudreaux, served as president while he was at Mechanical Construction Company, also worked at Cary Gamble.

Since becoming an ASHRAE member in 1983, I have had the pleasure of working with several of our past presidents. Bill "Red" Martin (president in 1951-52) left Cary Gamble and in 1962, formed William B. Martin Consulting Engineers. In 1970, he joined Guillot, Sullivan, Vogt, & Martin. In 1977, he joined Gene Sullivan to become Sullivan and Martin. After, he formed Martin Engineers. He finished his career at the Mathes Group.

R. K. Goode (1957-58) founded one of the leading rep agencies in the area, representing Barber Coleman in the air distribution and controls business for many years.

Edward Sanford (1960-61) also left Cary Gamble and formed his own firm called Sanford and Associates which practiced up until the mid 1980's until his death.

Randy Lewis (1962-63) had a very rich career which after leaving Cary Gamble, worked at Babst Mechanical, R.L. Mechanical and Johnson Controls until his death.

Harold Faller (1963-64) also had a very successful practice. His firm also spawned two future presidents – L. Rae Tinto (1973-74) and Jimmy Reuter (1989-90).



# DELTA DIGEST

New Orleans Chapter – October 2008

Page 11

Paul Coe, Jr. (1964-65) was very influential and was responsible for the mechanical design of several of our high-rises downtown. He left Cary Gamble for a very successful career at Mechanical Construction Company. MCC also provided us with Scuddy Fontenelle, who was president in 1982-83, along with Tom Boudreaux in 1988-89.

David Levine was very active in our Society and would have been president of the Society had it not been for his untimely death in 1980. As a testament to the service he provided to our Society, the Region we belong to (Region VII) awards a plaque that bears his name to the chapter president who exhibits the best performance during the year. To my knowledge, we have won it three during the presidencies of Deborah Brandt (1997-98), Cliff Gillio (2000-01), and my presidency in 1996-97.

Frank Fisher, president in 1966-67, formed a rep agency called Fisher Engineering, which also gave us presidents such as Mason Foil, Steve Sulli, and Mark Scheuermann.

Earl Morrison had the honor of being President during the 1972 Winter Meeting, which also included a huge product show. This was quite an honor for our chapter. This honor was repeated in 1994, with Mary Jenkins as our president during that meeting. This meeting, once called the Semi-Annual Meeting was also held in New Orleans in 1964 and once prior to being known as ASHRAE (1958). Earl formed a manufacturer's rep agency called Gulf Coast Engineering in the 1980's, which also provided us Sid Shepard, president in 1981-82.

Waring Green served our chapter faithfully for many years after our presidency in 1976-77 as our chapter historian. In 1999, the Society recognized his career and accomplishments by awarding Waring the honor of becoming a Fellow in 1999. In 2003, he also received the 50 Year Distinguished Service Award presented by the Society.

Ernie Belmont (1977-78) recently passed away, but anyone who ever attended a meeting with him remembers the great invocations he always provided us. He was always a pleasure to have at our meetings.

Harold Flettrich, who was president in 1979-80, and one of his employees later became our first female president, Katty LaVassuer in 1990-91. She was the first of several which includes Mary Jenkins (1993-94), Deborah Brandt (1997-98), Heidi Gremillion (2001-02), Gina Hiatt (2003-04), and Lonnie Carver (2004-2005). One of Harold's other employees who served as president was Joe Riorda in 1978-79. Joe also worked at NOPSI, which also provided us Arthur Mott in 1985-86. NOPSI and Louisiana Power and Light later merged and formed Entergy, which provided us Walter Barnes as president in 1991-92, and Lonnie Carver in 2004-2005.

Louis Orth served as president in 1984-85, and was committee chair for student activities for many years. Louis was a professor at Tulane, and had the distinction of teaching several of our members and past presidents.

Alan Maddox was president in 1987-88. He formed a test and balance agency several years ago, and presently works with Siemens.

When I joined the Society, Floyd Berlin was president (1983-84) and we had our regular meetings at Masson's at the Lakefront (near West End Café, where we had our executive committee meetings for several years).

We became concerned for a while as a chapter that we would put any restaurant out of business by our holding a meeting there. After Masson's closed, we met at Drago's (before they became famous for Char-Broiled Oysters) for a number of years (I remember Jimmy Reuter announcing during the meeting there that the World Series game had been postponed due to an earthquake- the same one which ravaged the San Francisco and the bay area). We met for a while at Smilie's. We met a few times at the Glass Garden in Metairie, which is now closed. We also met a couple of years at Stonebreaker's until its' demise. During my presidency, we met at Barreca's. Stonebreaker's was replaced by Mike Anderson's at the same location, where we met until it met the same fate. We met at the Steak Knife for nearly three years (recently flooded), until moving our meetings to Zeke's. We have been here at Carmine's since.

Frank Schambach was president in 1992, and after his presidency, was very active in Region VII, serving for several years as a Region VII Vice-Chair for Refrigeration. He was also the first committee chair to appear at an early morning Chapter Regional Conference Meeting with sunglasses! Besides being a recipient of the Chapter's Cary B. Gamble award in the early 1990's, he was also recognized by our Region with The Regional Award of Merit in 2000. The Society honored Frank with the Distinguished Service Award in 2003. During much of his time in ASHRAE, Frank worked at the University of New Orleans, where Harold Baur, our president in 2006-2008 presently works.



# DELTA DIGEST

New Orleans Chapter – October 2008

Page 12

Our chapter has hosted three Chapter Regional Conferences since 1984. The first was held during the presidency of Floyd Berlin in 1984. It coincided with the World's Fair in 1984, and was co-chaired by Floyd and Tom Boudreaux. With the fair at the same time, it proved to be quite a challenge organizing, and it was nearly swapped with the hosting chapter the next year, but they were able to pull the event off. For his efforts, Floyd was awarded the Cary B. Gamble Award in 1985. In the 1990's we had the honor of hosting two Chapter Regional Conferences. In 1992 was co-chaired by Barry Schully (President in 1994-95) and Louis Braquet. The CRC was so successful, when the New Orleans Chapter was selected to have the CRC in 1999, Barry was asked to chair again with Dave Strawn (President in 1995-1996). Both events rallied the chapter and helped the chapter grow for several years subsequent to the meeting. As a result of the success of each CRC, Barry was awarded the Cary B. Gamble Award, which recognized outstanding service to the chapter in 1992 and 1999. Dave Strawn was awarded the Cary B. Gamble Award in 1999 for his contribution to the 1999 CRC. Barry and Dave were also recognized by Region VII; both were recipients of the Regional Award of Merit in 2001 and 2002 respectively. Besides Barry and Dave, one other member of Schully Strawn and Associates served as president, and that was me, who served as your president in 1996-97.

Dave Pieper (2002-03) revitalized our Delta Digest back in the old days when we still used paper and was recognized by our Region for having the best newsletter in 1997.

Several of our past presidents have spent part of their career working for Johnson Controls, including Charlie Stiegler (1998-99) and now with Trane and Jay Dlugos (2005-2006) now with Gallo Mechanical. Jay has had the unique experience that no other president has had – being the president of a chapter that ceased to exist after Hurricane Katrina. He and his Board of Governors deserve a great deal of credit for revitalizing the chapter after our membership was scattered after the storm.

Damien Serauskas (2007-2008), spent his early career with Moses Engineers and is presently is owner of Professional Engineering Services.

Our chapter has been very fortunate to have the leadership we have enjoyed. In attempting to give a brief overview of some to the accomplishments of our past presidents, the problem we create is overlooking the accomplishments of those we have not named, who gave up years of service to our chapter. For all those we have mentioned and for all those who we have missed, we thank you for the leadership you have provided for our chapters existence and growth. It is our hope that you will pass along the contributions of those not named so they too can be recognized for what they did.

Submitted by Buddy Hodge, originally written May 2004, revised May 2006 and May 2008.



# DELTA DIGEST

New Orleans Chapter – October 2008

Page 13

## **Advertise your business for the entire 2008 – 2009 ASHRAE year !!!**

In years past, the Delta Digest has sold advertisements to be included in the Digest, in order to offset the cost of reproduction and mailing of the printed version. Since we have become an electronic newsletter, we will now sell advertisement space and donate the proceeds to Resource Promotion. Previous advertisement fees were somewhat costly, and only included a limited number of mailings. This year, the Delta Digest will be updated and distributed electronically every month, hard copies will be made available at the monthly meetings, and the entire document is posted on-line on the local N.O. Chapter website. A lot of exposure for a little investment! The fee structure has been established as follows:

Business Card Ad:	\$50.00
Half-Page Ad:	\$150.00

Anyone interested in placing your business card or half-page ad into the Digest this year, contact Stuart Feilden @ [Stuart.Feilden@honeywell.com](mailto:Stuart.Feilden@honeywell.com) or 504-427-4505.  
Checks should be made to ASHRAE Research.



# DELTA DIGEST

New Orleans Chapter – October 2008

Page 14

## Advertisements

**John Bevington**  
985-809-0888  
jbevington@chillcoinc.com

**HVAC Systems**  
Service • Upgrade • Installation • Rental

Place your add here !!!

Place your add here !!!

Place your add here !!!

Place your add here !!!



# DELTA DIGEST

New Orleans Chapter – October 2008

Page 15

---

[STUART FEILDEN](#) - EDITOR

---