



DELTA DIGEST

May 2011

Editor: Stuart Feilden

The [New Orleans Chapter of ASHRAE \(www.ashraeno.com\)](http://www.ashraeno.com) is once again pleased to distribute the latest Delta Digest, keeping you up-to-date with the latest happenings of your local ASHRAE chapter. As always, if you have any comments that can help us serve you better, please let us know.

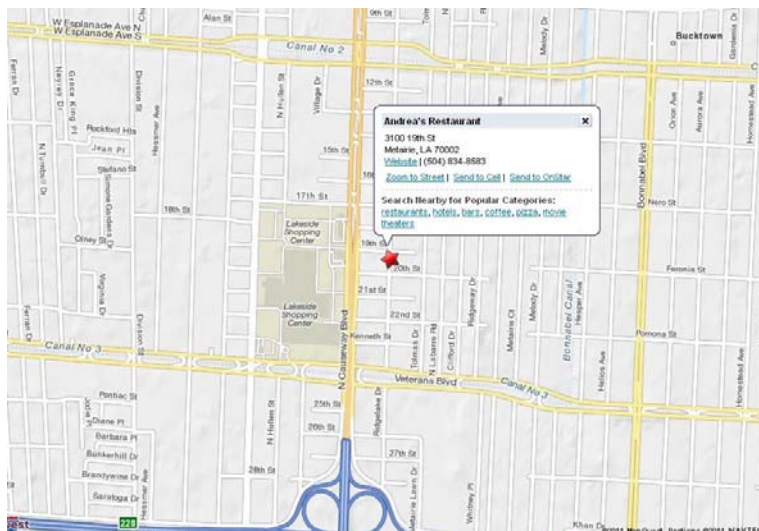
Meeting Information:

- Date and Time:** Thursday, May 12, 2011
- Venue:** Andrea's Italian Restaurant
3100 19th Street at Ridgelake, Metairie, LA 70002 (See Map Below)
- Time:** 5:30 pm (Social) & 6:00 pm (Dinner & Presentation Begin)
- Cost:** \$ 30.00 per person (Includes dinner)
- Speaker:** Julian R. de Bullet, McQuay International, ASHRAE DL
- Topic:** Variable Flow Primary Chiller Plant Design

We will focus on primary/secondary and variable primary flow chiller plant design as influenced by ASHRAE Standard 90.1. The material will cover pros and cons, design parameters and control issues. Next we will discuss low delta T syndrome. We will explain what it is and why it happens. Then we will discuss how to correct it. The seminar concludes with some discussion on Life cycle payback. – Julian R. de Bullet

Please RSVP to Stuart.Feilden@honeywell.com for this event.

This is a great opportunity to attend a highly informative presentation and earn 1.0 PDH. Please feel free to bring a colleague or associate to the meeting and pass this along to any ASHRAE members who may not be on this list.





DELTA DIGEST

New Orleans Chapter – May 2011

Page 2

President's Message

May 2011

Dear Fellow Members, Engineering Students, HVAC Colleagues and Guests,

Our May dinner meeting is dedicated to our Past Presidents to whom a special invitation is extended. There have been 77 Past Presidents who have served our organization. George Elmer May was the organization's first President in 1934. Some of our past presidents are still active and involved today. I have had the pleasure of working with several of the past presidents and have been honored to have their leadership and friendship. The May dinner meeting gives you the opportunity to meet our past leaders. The event also provides these leaders a chance to reconnect with one another, revisit fond memories as well as meet the current membership. This meeting will be held on the 2nd Thursday in lieu of the 3rd Tuesday. Please make a note. We will continue our newest tradition of location – Andrea's. Last year we had nearly 50 people at the meeting. I have already told Andrea's to plan on 60 people, so let's try to show up in full force.

If anyone needs anything, please do not hesitate to reach out to myself or one of my board members.

Kyle Sharbonno



DELTA DIGEST

New Orleans Chapter – May 2011

Page 3

2010 – 2011 ASHARE New Orleans Events

General Membership Meeting Schedule

*** Meetings are typically on the 3rd Tuesday of every month. ***

| | |
|--------------------------|------------------------------------|
| <i>September Meeting</i> | <i>Tuesday, September 21, 2010</i> |
| <i>October Meeting</i> | <i>Tuesday, October 19, 2010</i> |
| <i>November Meeting:</i> | <i>Tuesday, November 16, 2010</i> |
| <i>Christmas Party:</i> | <i>Thursday, December 16, 2010</i> |
| <i>January Meeting:</i> | <i>Tuesday January 18, 2011</i> |
| <i>February Meeting:</i> | <i>Tuesday, February 15, 2011</i> |
| <i>March Meeting:</i> | <i>Tuesday, March 15, 2011</i> |
| <i>April Meeting:</i> | <i>Tuesday, April 19, 2011</i> |
| <i>May Meeting:</i> | <i>Thursday, May 12, 2011</i> |



Special Events Schedule

| | |
|-------------------------------------|--|
| <i>ASHRAE/ASPE Christmas Party</i> | <i>December 16, 2010</i> |
| <i>Past President's Night</i> | <i>December 16, 2010</i> |
| <i>Research Promotion Night</i> | <i>December 16, 2010</i> |
| <i>17th Annual Golf Tournament:</i> | <i>March 25th, Colonial Country Club</i> |

General Membership Meeting Presentation Topics

| | |
|---------------|--|
| <i>Sep 21</i> | <i>"Room Systems," David John, DL, Metal Industries</i> |
| <i>Oct 19</i> | <i>"Thermal Energy Storage," Mark Steven Johnson, Calmac Manufacturing</i> |
| <i>Nov 16</i> | <i>Brian Monk, DL, Carrier</i> |
| <i>Dec 16</i> | <i>No speaker — Christmas Party</i> |
| <i>Jan 18</i> | <i>Variable Refrigerant Flow Benefits for Variable Load Applications, Robert Hanna, LG Electronics</i> |
| <i>Feb 15</i> | <i>Hoy Bohanon, DL, Working Buildings, LLC</i> |
| <i>Mar 15</i> | <i>Chris Muller, DL, Purafil</i> |
| <i>Apr 19</i> | <i>Dennis Stanke, DL, Trane</i> |
| <i>May 12</i> | <i>J. deBullet, DL, McQuay</i> |

Board Meeting Schedule

| | |
|------------------|-----------------------------------|
| <i>September</i> | <i>Friday, September 17, 2010</i> |
| <i>October</i> | <i>Friday, October 15, 2010</i> |
| <i>November</i> | <i>Friday, November 12, 2010</i> |
| <i>January</i> | <i>Friday, January 14, 2011</i> |
| <i>February</i> | <i>Friday, February 11, 2011</i> |
| <i>March</i> | <i>Friday, March 11, 2011</i> |
| <i>April</i> | <i>Friday, April 15, 2011</i> |
| <i>May</i> | <i>Friday, May 13, 2011</i> |





Chapter Technology Transfer Corner

Sustainable Design

April 18, 2011 ASHRAE Funds Undergraduate Project on Net Zero Energy Design Toolkit

ATLANTA – A toolkit to help better understand the impacts of building construction related to net zero energy targets is being developed by undergraduate students in their senior year through an ASHRAE Undergraduate Senior Project Grant.

<http://www.ashrae.org/pressroom/detail/ashrae-funds-undergraduate-project>



Government Affairs

March 21, 2011 Luncheon Briefing to Focus on Secure and Sustainable U.S. Embassies

ATLANTA—As iconic symbols of diplomacy, U.S. Embassies are subject to a range of security and terrorist threats. The ongoing threats to those who live and work in overseas diplomatic facilities drive the security, design, construction and operations of U.S. Embassies.

<http://www.ashrae.org/pressroom/detail/2011-03-21>

Technology

April 26, 2011 ASHRAE Seeks Public Comment on Standard for Existing Buildings

ATLANTA – To ensure a sustainable future, the greatest opportunity lies in modifying existing buildings. Only 2 percent of construction projects are for new buildings, while 86 percent of construction dollars go into renovation of our existing building stock.

<http://www.ashrae.org/pressroom/detail/ashrae-seeks-public-comment-on-standard>

Technology Awards Program

The purpose of the ASHRAE Technology Awards program is to:

1. Recognize ASHRAE members who design and/or conceive innovative technological concepts that are proven through actual operating data;
2. Communicate innovative systems designs to other ASHRAE members;
3. Highlight technological achievements of ASHRAE to others, including associated professionals and societies worldwide, as well as building and facility owners.

For more information on this program, [Click Here](#).



DELTA DIGEST

New Orleans Chapter – May 2011

Page 5

Young Engineers in ASHRAE

Please direct any questions you may have on the ASHRAE YEA Connection to: youngengineers@ashrae.org. Expect the next edition of the newsletter in February 2009. Please feel free to email submissions for future newsletter articles regarding events at your local chapter.

The primary objective for the YEA Committee of Members Council is to enhance our member benefits for young professional ASHRAE members by identifying activities and services focused on their needs.

Membership Corner

We wish to encourage those who may have changed jobs, addresses, phone numbers, or e-mail addresses to please logon to the ASHRAE website to update your account information. Consolidation of this information will be utilized to develop the Chapter Directory, so don't delay! Don't let bad information get published!

WWW.ASHRAE.ORG

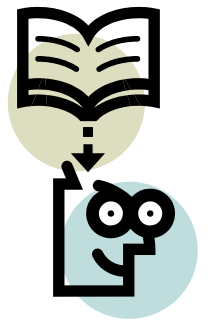
This year, news of our meetings will be transmitted in various forms, all in an effort to increase our Chapter's visibility and boost member attendance. Our Chapter has many members we haven't seen in quite a while. Please contact your associates in our profession (forward their information to [Stuart Feilden](#)), and encourage them to get involved in our Society on the local, regional, national, or international level. Also, look for meeting announcements in City Business and the weekend Money Section Calendar of the Times Picayune. Not receiving e-mail notifications? Changed jobs or e-mail addresses?

ASHRAE Research

Thank you for your support of ASHRAE.

Kelly Hasney Jr., ASHRAE NO Chapter RP Chair

Contributions to ASHRAE Research should be made payable to ASHRAE Research and mailed to Kelly Hasney Jr., 5751 River Road, Harahan, LA 70123





DELTA DIGEST

New Orleans Chapter – May 2011

Page 6

ASHRAE Chapter Banner



The bottom of the banner says "Founded in 1904."

[STUART FEILDEN](#) - EDITOR

Statements made in this Publication are not Expressions of the Society or the Chapter, and may not be reproduced without permission of the Chapter