



# DELTA DIGEST

January 2011

Editor: Stuart Feilden

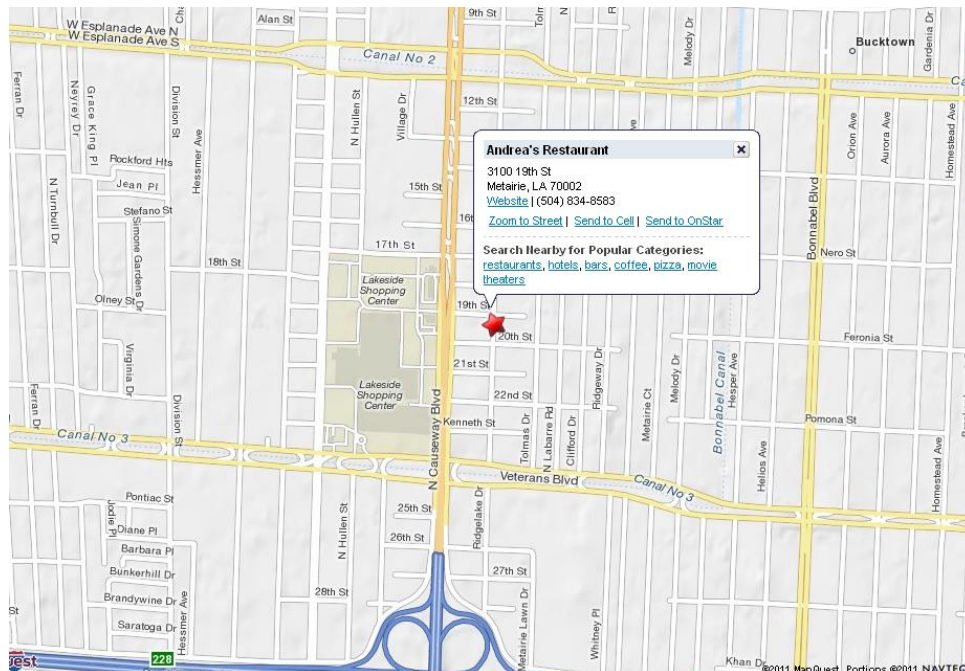
The [New Orleans Chapter of ASHRAE \(www.ashraeno.com\)](http://www.ashraeno.com) is once again pleased to distribute the latest Delta Digest, keeping you up-to-date with the latest happenings of your local ASHRAE chapter. As always, if you have any comments that can help us serve you better, please let us know.

## Meeting Information:

- Date and Time:** Tuesday, January 18, 2011
- Venue:** Andrea's Italian Restaurant  
3100 19th Street at Ridgelake, Metairie, LA 70002 (See Map Below)
- Time:** 5:30 pm (Social) & 6:00 pm (Dinner & Presentation Begin)
- Cost:** \$ 30.00 per person (Includes dinner)
- Speaker:** Robert Hanna, Regional Sales Engineer, LG Electronics Usa, Inc.
- Topic:** Variable Refrigerant Flow Benefits for Variable Load Applications

Please RSVP to [Stuart.Feilden@honeywell.com](mailto:Stuart.Feilden@honeywell.com) for this event.

This is a great opportunity to attend a highly informative presentation and earn 1.0 PDH. Please feel free to bring a colleague or associate to the meeting and pass this along to any ASHRAE members who may not be on this list.





# DELTA DIGEST

New Orleans Chapter – January 2011

Page 2

## *President's Message*

January 2011

Dear Fellow Members, Engineering Students, HVAC Colleagues and Guests,

I sincerely hope each of you had an enjoyable holiday season. I would like to wish you and your family Happy New Year. The coming of a new calendar year also signifies the halfway point of our ASHRAE year. It has been my pleasure to serve as your president thus far, and I look forward to continuing to do so over the next few months. We still have many exciting events on the schedule including our annual golf tournament, ALI Seminar, five more chapter meetings including Student Night and Past Presidents' Night, and more. I would like to take this opportunity to thank my hard working Board of Governors. Without them, this year would not be possible.

The first half of our ASHRAE year was marked by the changing of venues to accommodate our group since Carmines is in the process of relocating. I have received overwhelming praise for our latest and now newest home, Andreas off Causeway Blvd. I am in full support of the chapter in booking our future meetings at this location. I would like to ask of the members one thing: Please try and give Stuart Feilden a very accurate RSVP / headcount each month as Andreas may charge us for more than we have in the meeting if our attendance falls below a certain level. An easy remedy to this problem is high attendance to all of the meetings! Please stay close to the monthly Delta Digest and the website [www.ashraeno.com](http://www.ashraeno.com) for all of the latest updates.

Have a happy and safe 2011....

A handwritten signature in black ink, appearing to read 'K. Sharbonno'.

Kyle Sharbonno



# DELTA DIGEST

New Orleans Chapter – January 2011

Page 3

## 2010 – 2011 ASHARE New Orleans Events

### General Membership Meeting Schedule

\*\*\* Meetings are typically on the 3<sup>rd</sup> Tuesday of every month. \*\*\*

<i>September Meeting</i>	<i>Tuesday, September 21, 2010</i>
<i>October Meeting</i>	<i>Tuesday, October 19, 2010</i>
<i>November Meeting:</i>	<i>Tuesday, November 16, 2010</i>
<i>Christmas Party:</i>	<i>Thursday, December 16, 2010</i>
January Meeting:	Tuesday January 18, 2011
February Meeting:	Tuesday, February 15, 2011
March Meeting:	Tuesday, March 15, 2011
April Meeting:	Tuesday, April 19, 2011
May Meeting:	Tuesday, May 17, 2011



### Special Events Schedule

<i>ASHRAE/ASPE Christmas Party</i>	<i>December 16, 2010</i>
<i>Past President's Night</i>	<i>December 16, 2010</i>
<i>Research Promotion Night</i>	<i>December 16, 2010</i>
UNO Spring Event	TBD
15 <sup>th</sup> Annual Golf Tournament:	TBD in April 2010 (April 8 <sup>th</sup> – Tentative)

### General Membership Meeting Presentation Topics

<i>Sep 21</i>	<i>"Room Systems," David John, DL, Metal Industries</i>
<i>Oct 19</i>	<i>"Thermal Energy Storage," Mark Steven Johnson, Calmac Manufacturing</i>
<i>Nov 16</i>	<i>Brian Monk, DL, Carrier</i>
<i>Dec 16</i>	<i>No speaker – Christmas Party</i>
Jan 18	Variable Refrigerant Flow Benefits for Variable Load Applications, Robert Hanna, LG Electronics
Feb 15	Hoy Bohanon, DL, Working Buildings, LLC
Mar 15	Chris Miller, DL, Purafil
Apr 19	Dennis Stanke, DL, Trane
May 17	J. deBullet, DL, McQuay

### Board Meeting Schedule

<i>September</i>	<i>Friday, September 17, 2010</i>
<i>October</i>	<i>Friday, October 15, 2010</i>
<i>November</i>	<i>Friday, November 12, 2010</i>
January	Friday, January 14, 2011
February	Friday, February 11, 2011
March	Friday, March 11, 2011
April	Friday, April 15, 2011
May	Friday, May 13, 2011





# DELTA DIGEST

New Orleans Chapter – January 2011

Page 4

## Chapter Technology Transfer Corner

### Sustainable Design

#### **December 20, 2010** ASHRAE: Standard 189.1 Adopted as Part of Army Sustainability Policy

**ATLANTA** – ASHRAE leaders recently met with U.S. Army officials regarding a new sustainable design and development policy that incorporates requirements of the green building standard developed by the Society, USGBC and IES.

<http://www.ashrae.org/pressroom/detail/17685>



### Government Affairs

#### **December 15, 2010** ASHRAE Applauds Signing of Federal Buildings Personnel Training Law of 2010

**ATLANTA** – Federal legislation signed into law this week will provide training for federal building personnel in the areas of building operations and maintenance, energy management, safety and design functions.

<http://www.ashrae.org/pressroom/detail/17684>

### Technology

#### **December 7, 2010** ASHRAE Brings Hot Topics to AHR Expo Attendees

**ATLANTA** – Guidance on industry hot topics is being provided from ASHRAE through two free sessions at the AHR Expo® in Las Vegas, Nev.

<http://www.ashrae.org/pressroom/detail/17682>

#### **November 29, 2010** Newest Version of Thermal Comfort Standard Provides New Provisions on Elevated Air Speeds

**ATLANTA** – New requirements regarding air speeds, analysis and documentation are included in the newly published ASHRAE thermal comfort standard, ANSI/ASHRAE Standard 55-2010, *Thermal Environmental Conditions for Human Occupancy*.

<http://www.ashrae.org/pressroom/detail/17670>

## Technology Awards Program

The purpose of the ASHRAE Technology Awards program is to:

1. Recognize ASHRAE members who design and/or conceive innovative technological concepts that are proven through actual operating data;
2. Communicate innovative systems designs to other ASHRAE members;
3. Highlight technological achievements of ASHRAE to others, including associated professionals and societies worldwide, as well as building and facility owners.

---

*Statements made in this Publication are not Expressions of the Society or the Chapter, and may not be reproduced without permission of the Chapter*



# DELTA DIGEST

New Orleans Chapter – January 2011

Page 5

For more information on this program, [Click Here](#).

## Young Engineers in ASHRAE

Please direct any questions you may have on the ASHRAE YEA Connection to: [youngengineers@ashrae.org](mailto:youngengineers@ashrae.org). Expect the next edition of the newsletter in February 2009. Please feel free to email submissions for future newsletter articles regarding events at your local chapter.

The primary objective for the YEA Committee of Members Council is to enhance our member benefits for young professional ASHRAE members by identifying activities and services focused on their needs.

## Membership Corner

We wish to encourage those who may have changed jobs, addresses, phone numbers, or e-mail addresses to please logon to the ASHRAE website to update your account information. Consolidation of this information will be utilized to develop the Chapter Directory, so don't delay! Don't let bad information get published!

[WWW.ASHRAE.ORG](http://WWW.ASHRAE.ORG)

This year, news of our meetings will be transmitted in various forms, all in an effort to increase our Chapter's visibility and boost member attendance. Our Chapter has many members we haven't seen in quite a while. Please contact your associates in our profession (forward their information to [Stuart Feilden](#)), and encourage them to get involved in our Society on the local, regional, national, or international level. Also, look for meeting announcements in City Business and the weekend Money Section Calendar of the Times Picayune. Not receiving e-mail notifications? Changed jobs or e-mail addresses?

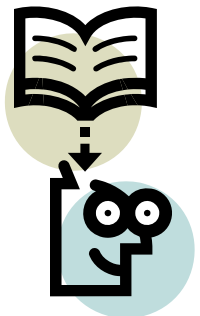
## ASHRAE Research

Thank you for your support of ASHRAE.

One of the missions of ASHRAE is to fund and administer research projects related to the HVAC/R sciences. Numerous advances in our industry have been made over the past several decades due to the work funded by ASHRAE Research. Last year we had excellent participation by our membership, and we were able to exceed our goal. Many thanks to our past RP Chairman Harold Baur for his hard work. Harold was recognized for his accomplishments at our recent CRC in Memphis, including receiving the Regional Award for outstanding performance as RP Chair. Congratulations Harold!

As we move head first into the new ASHRAE year, please know that I will be contacting you to discuss Research Promotion, and will request your financial support for this worthwhile cause. After last year's outstanding performance, expectations are high! Thank you in advance for your consideration of making your tax-free donation to Research Promotion this year.

Best regards,





# DELTA DIGEST

New Orleans Chapter – January 2011

Page 6

Damien W. Serauskas, P.E.  
ASHRAE NO Chapter RP Chair

Contributions to ASHRAE Research should be made payable to ASHRAE Research and mailed to Damien W. Serauskas, P.E., 15 Cypress Point Lane, New Orleans, LA 70131



# DELTA DIGEST

New Orleans Chapter – January 2011

Page 7

## ASHRAE Chapter Banner



The bottom of the banner says "Founded in 1904."

---

[STUART FEILDEN](#) - EDITOR

---

*Statements made in this Publication are not Expressions of the Society or the Chapter, and may not be reproduced without permission of the Chapter*